


MATERNITY SERVICES

JANUARY 2020



TAKING  IN OUR CARE

Barking, Havering and Redbridge 
University Hospitals
NHS Trust

THE CURRENT PICTURE

Maximum number of babies we can comfortably deliver safely is 8,000

Equates to an average of 667 per month

2011: we were delivering nearly 10,000 women and reliant on agency staff to support them. CQC inspected the service - informed us it required improvement

That year, catchment areas from which women could have their births at Queen's and King George hospitals were re-defined to ensure maximum number of births was not exceeded, improving safety and quality of the service and providing continuity of care for women throughout pregnancy and birth

2013: Queen's Birth Centre was opened - integral in the delivery of a safe service

Expectation of 1,000 births per year through the centre



THE CURRENT PICTURE

Over past 3 years seen an increase in women with complex conditions

These women are unable to deliver in the Birth Centre which puts undue pressure on our Labour ward

Where local numbers have been lower, taken women from outside catchment areas

However significant increase in demand over the last few months, particularly from women from outside our catchment areas

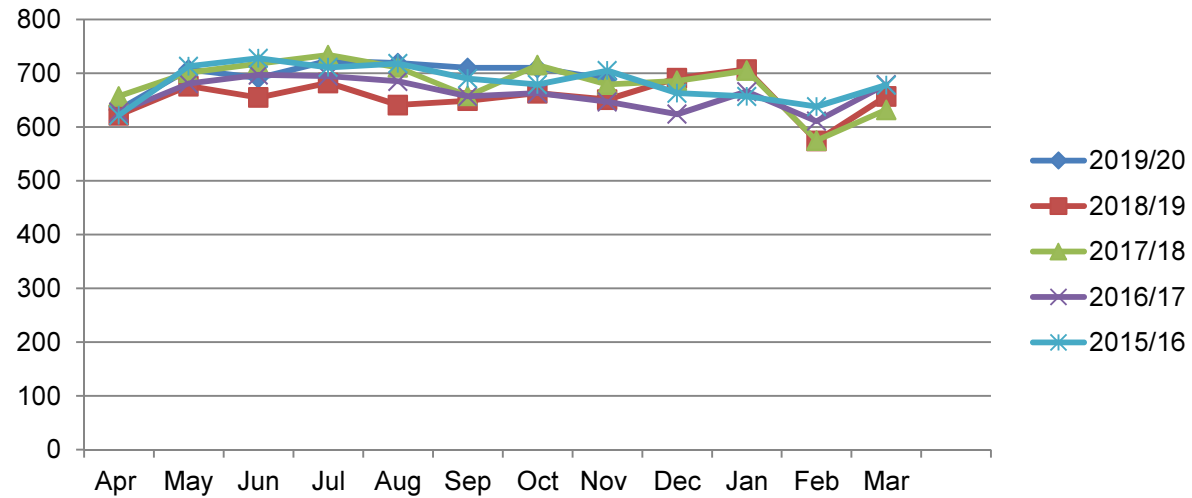
Due to this, now adhering strictly to boundaries to provide the right levels of care

Encouragingly, last month we saw a drop in numbers – we will continue to monitor this and have put in the relevant plans and mitigations to keep women safe and provide the continuity of care they deserve

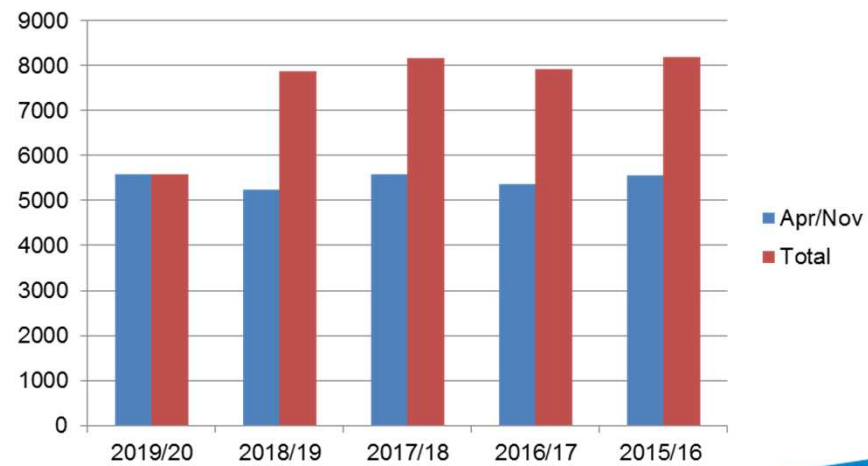


BIRTHING TRENDS

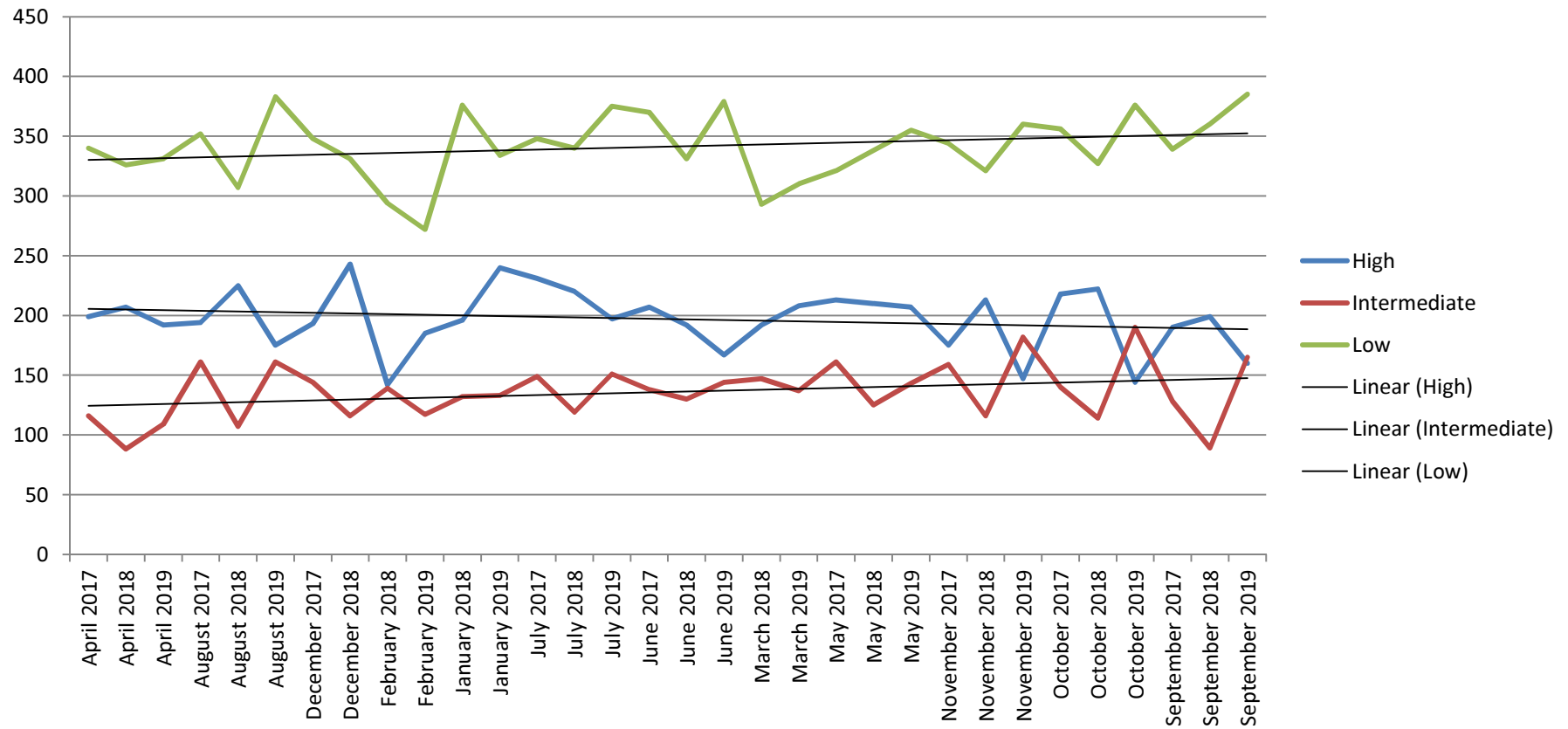
Deliveries per year



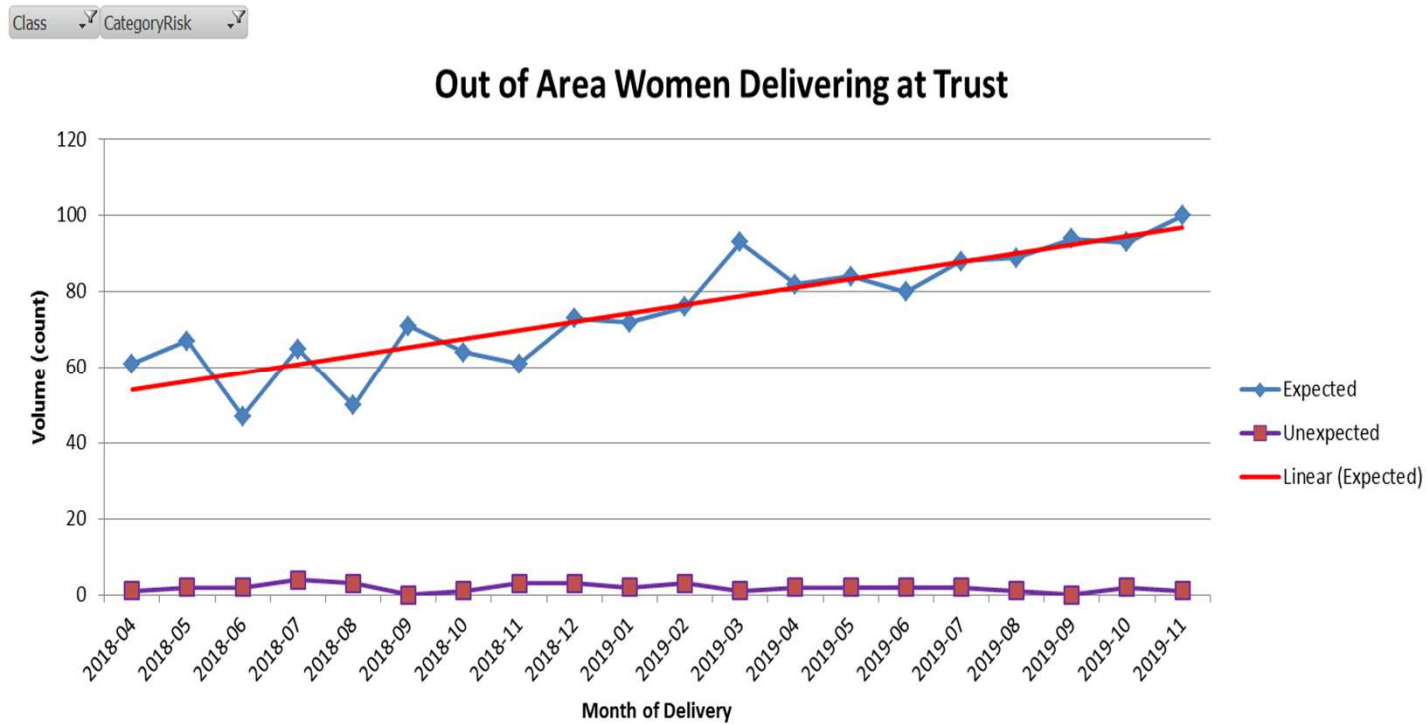
Comparison of deliveries



CHANGES IN ACUITY



NUMBERS OF WOMEN FROM OUTSIDE CATCHMENT AREAS



MAINTAINING SUSTAINABLE SERVICES ACROSS NORTH EAST LONDON

Demands on services expected to continue:

- population growth
- extensive new housing developments planned
- increasing migration to our boroughs
- patient choice

Important we address this as a system

- Currently working with Local Maternity Service for ELHCP, GPs and commissioners to support reduction in number of women delivering at our Trust – green shoots starting to show
- Reviewing capacity and required workforce across north east London

